

SAMANA  
LAKE VIEWS 2

ELEVATING LIFESTYLE, PERSONIFYING LUXURY

SAMANA  
DEVELOPERS



# TRANQUIL ELEGANCE

Experience the serene beauty and sophisticated charm of our meticulously crafted residences at SAMANA Lake Views 2, where every detail reflects elegance and grace. Discover a new level of luxury living, where tranquillity and opulence harmoniously coexist.

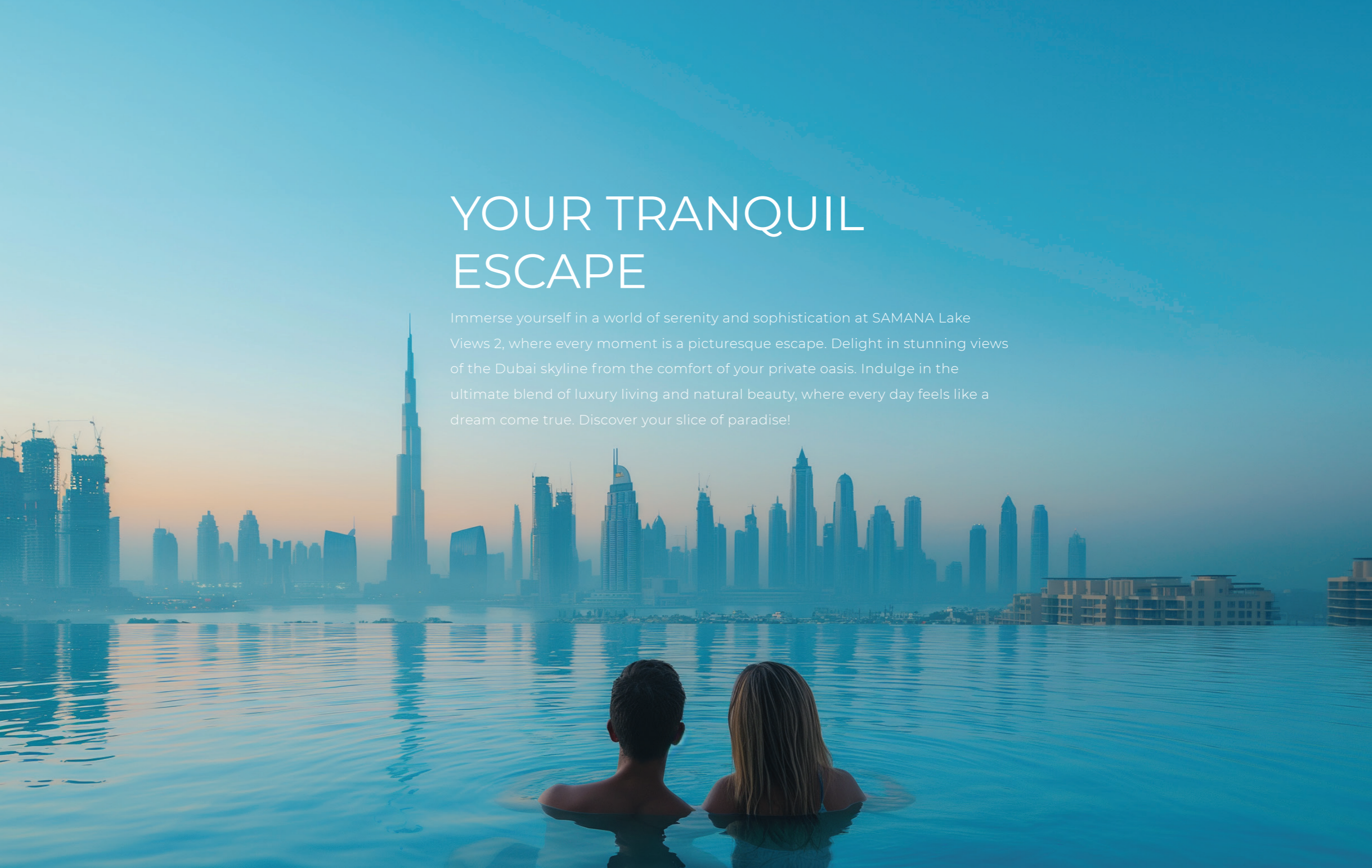


# MAJESTIC IMPRESSIONS

An architectural masterpiece, SAMANA Lake Views 2 is a beacon of modern design and luxury living. With its striking facade and meticulous attention to detail, this iconic project sets a new standard of sophistication in Dubai's skyline. Welcome home to a new era of elegance.

# YOUR TRANQUIL ESCAPE

Immerse yourself in a world of serenity and sophistication at SAMANA Lake Views 2, where every moment is a picturesque escape. Delight in stunning views of the Dubai skyline from the comfort of your private oasis. Indulge in the ultimate blend of luxury living and natural beauty, where every day feels like a dream come true. Discover your slice of paradise!





САМАНА

САМАНА

САМАНА





# YOUR STYLE STATEMENT

Make a bold statement with SAMANA Lake Views 2 and elevate your everyday lifestyle.

Discover refined elegance and opulence in every detail, as you prepare to immerse yourself in this luxurious retreat. Experience a new standard of sophistication, where every moment is a testament to your impeccable taste. Your oasis of luxury awaits!





# YOUR GATEWAY TO CONVENIENCE

Located adjacent to Sheikh Mohammed Bin Zayed Road, Dubai Production City offers you a blend of residential and commercial properties. The place offers you easy access to all the prime destinations of the city.

## **3 – 5 min**

Kids Kingdom Nursery School  
City Centre Me'aisem

## **5 – 10 min**

The Wonder Years Nursery  
GEMS United School  
Jumeirah Golf Estates

## **10 – 15 min**

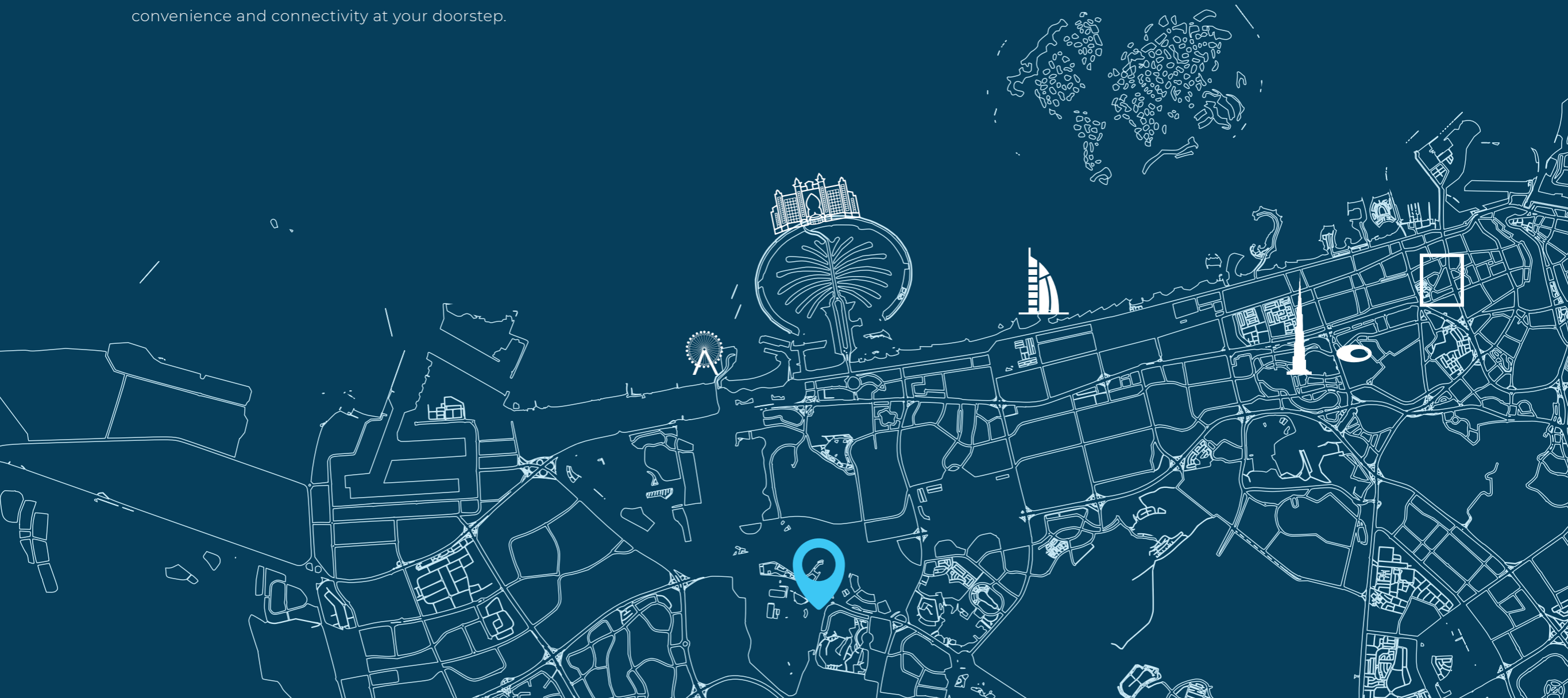
JBR Beach  
Downtown  
Dubai British School  
Dubai Marina

## **15 – 20 min**

Global Village  
Dubai Mall  
Burj Khalifa

# CONVENIENCE AT ITS BEST

Enjoying a prime location in Dubai Production City, this project offers effortless access to key destinations. With seamless connectivity to major roads and proximity to airports, business hubs, and leisure attractions, this address ensures convenience and connectivity at your doorstep.







# SOULFUL SERENITY

Find your inner peace amidst the gentle ripples and tranquil surroundings that envelop you as you immerse yourself in pure bliss. With every moment spent in our idyllic oasis, discover a deeper connection to nature and a renewed sense of harmony. Experience the ultimate escape from the everyday hustle and bustle at SAMANA Lake Views.



A hand in a dark suit jacket holds a set of car keys. The keys have a black fob with the letters 'O', 'S', and '4' on it. The background is a blurred car with bokeh light effects, suggesting a night or low-light setting. The overall color palette is dark with blue and white highlights.

# SEAMLESS ARRIVAL

Experience the luxury of effortless arrival at SAMANA Lake Views 2 with our valet parking service. Our professional team ensures your vehicle is taken care of, allowing you to make a grand entrance and start your experience on the right note. Enjoy the convenience and luxury of valet parking, setting the tone for your life at SAMANA Lake Views 2.





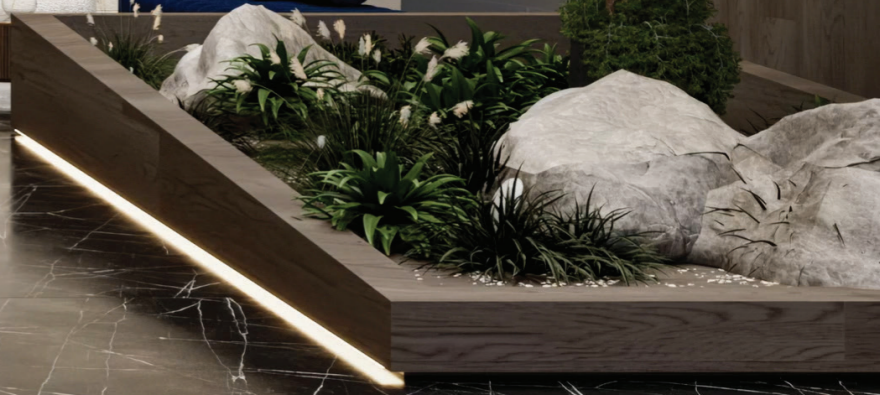




# POWER UP IN STYLE

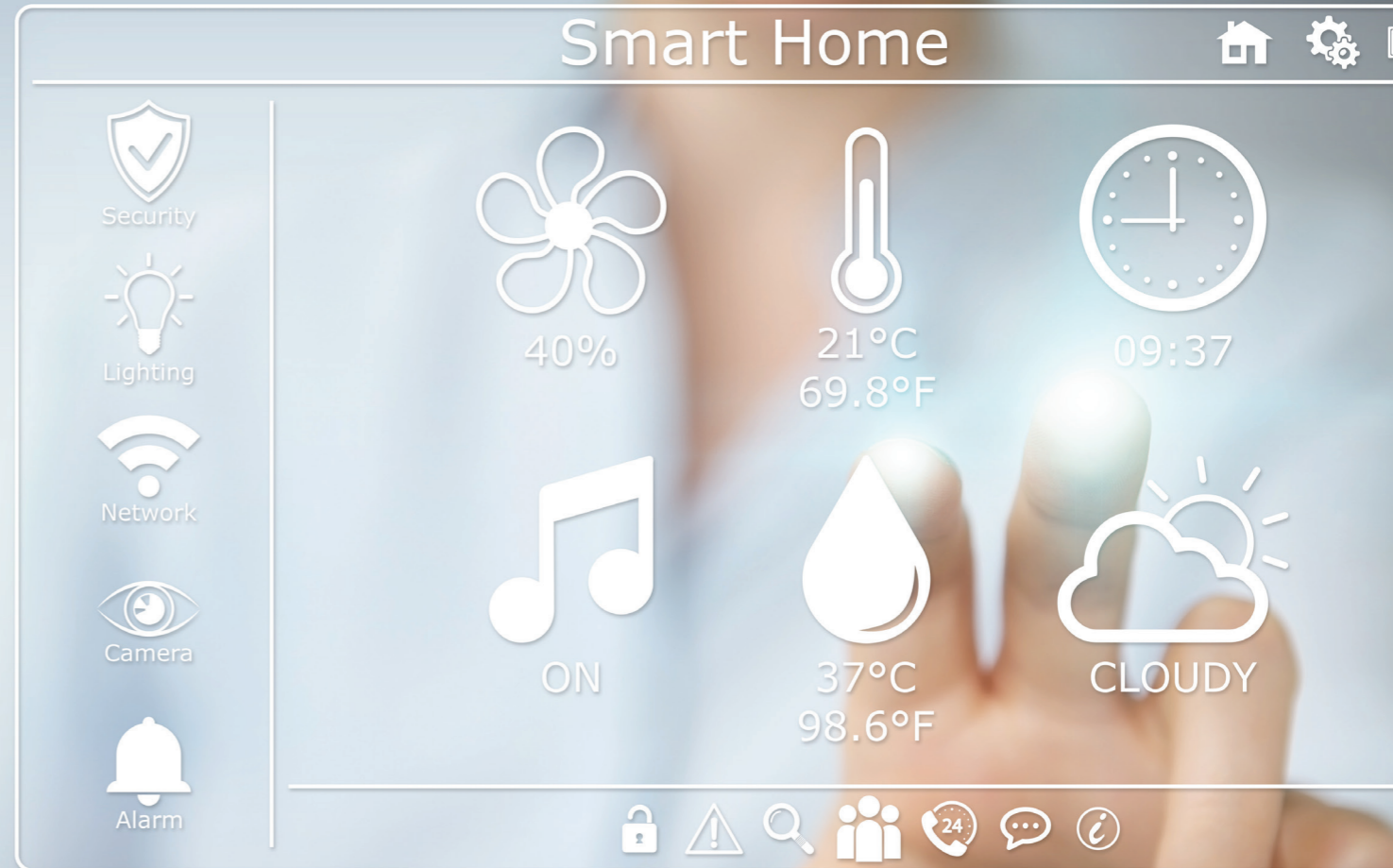
Charge up your electric vehicle at SAMANA Lake Views 2 with our green parking solutions. Embrace sustainability with ease as you enjoy the convenience of charging your vehicle while you relax. Experience eco-conscious living at its finest, where every detail is designed with the environment in mind.

SAMANA



# FUTURISTIC LIVING

Indulge in the pinnacle of modern living at SAMANA Lake Views 2, where cutting-edge technology enhances every aspect of your daily life. From smart home features to a range of other technologically advanced amenities, living here is not just convenient but truly futuristic. Embrace a lifestyle where innovation meets comfort, and where your home adapts to your needs effortlessly.





ALCANTARA

ALCANTARA

ERRO SAARENEN  
INTERIORS

Guggenheim Museum





# YOUR POOLSIDE ESCAPE

Escape to your private oasis at SAMANA Lake Views 2, where the pool becomes your sanctuary of luxury and relaxation. Dive into a world of comfort and enjoyment. Indulge in the ultimate poolside experience, where luxury and privacy meet to redefine your idea of paradise.





**DECIDE**

**NO PAIN  
NO GAIN**

**LET'S GO**

**NO PAIN  
NO GAIN**





# DISCOVER THE ESSENCE OF LIVING

Experience the joy of modern living at SAMANA Lake Views 2, where every day is a celebration. Explore the scenic beauty of our surroundings, with lush greenery and stunning architecture creating a backdrop for unforgettable moments. Embrace the perfect blend of adventure and equanimity, where life's simple pleasures are elevated to new heights.





The image shows a contemporary living and dining space. On the left, a kitchen island with a marble countertop holds a bowl of fruit. In the center, a round dining table with four chairs is set. On the right, a light-colored sofa with patterned cushions sits on a rug, with a coffee table in front. The background features a wall with framed art and a large potted plant. The entire scene is overlaid with a semi-transparent blue filter, and the text 'UNITS LAYOUT' is centered in a white box.

# UNITS LAYOUT

# STUDIO WITH POOL



# 1 BEDROOM WITH POOL



# 2 BEDROOM WITH POOL





# SAMANA DEVELOPERS

4th Floor, Building 7,  
Bay Square, Business Bay,  
Dubai, United Arab Emirates

+971 4 563 9510  
[info@samanadevelopers.com](mailto:info@samanadevelopers.com)  
[www.samanadevelopers.com](http://www.samanadevelopers.com)

Developer Registration Number  
Project Registration Number  
Escrow Account Number